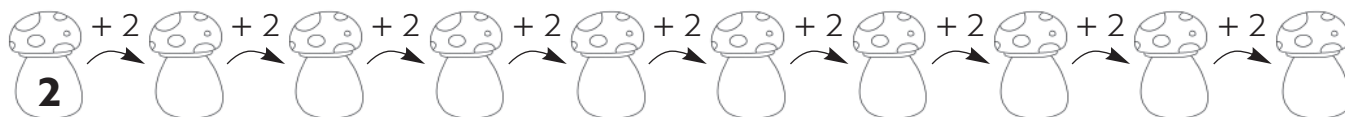


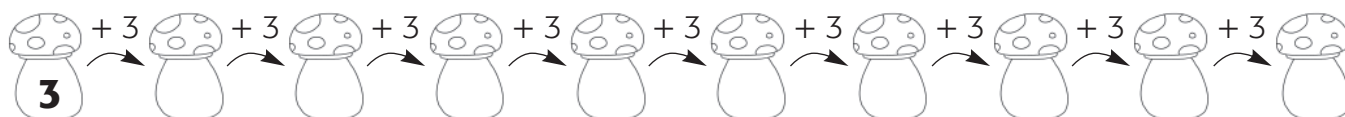
MOLTIPLICAZIONI TRA I FUNGHI

1 Completa inserendo i **multipli** dei numeri indicati.

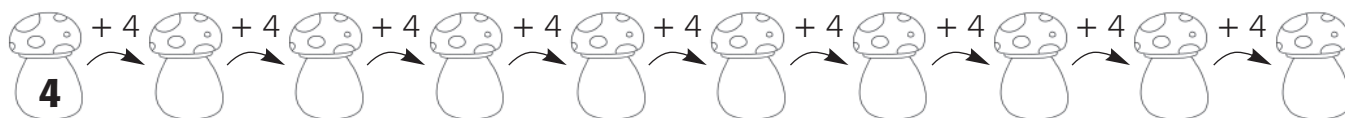
• Numero 2



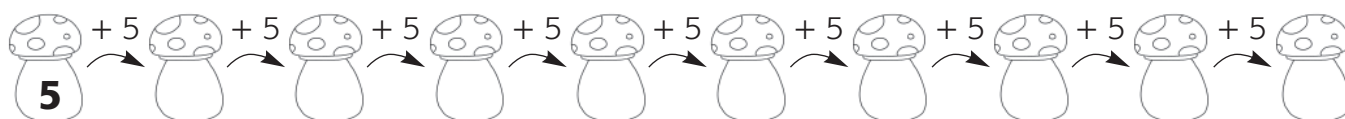
• Numero 3



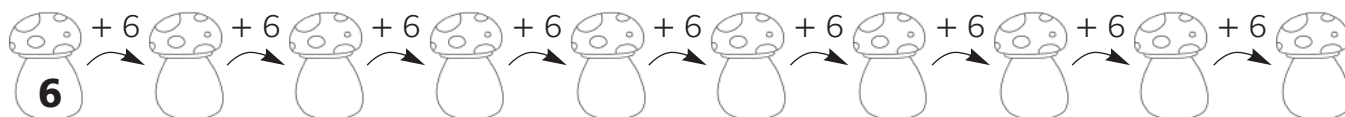
• Numero 4



• Numero 5



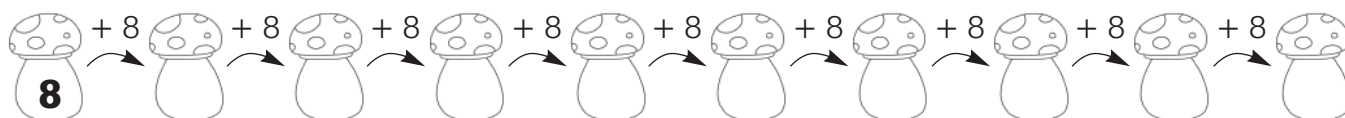
• Numero 6



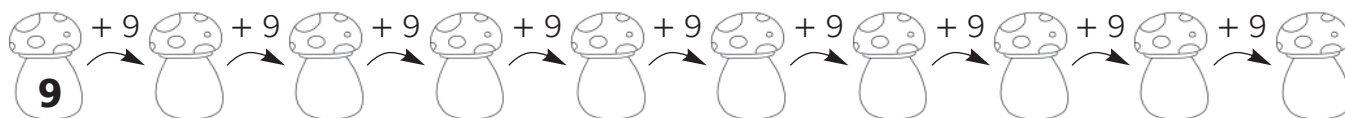
• Numero 7



• Numero 8



• Numero 9



MOLTIPLICAZIONI E DIVISIONI IN RIGA

1 Completa.

$36 = \dots \times \dots$

$72 = \dots \times \dots$

$28 = \dots \times \dots$

$54 = \dots \times \dots$

$21 = \dots \times \dots$

$42 = \dots \times \dots$

$64 = \dots \times \dots$

$35 = \dots \times \dots$

$70 = \dots \times \dots$

$56 = \dots \times \dots$

$48 = \dots \times \dots$

$18 = \dots \times \dots$

$45 = \dots \times \dots$

$32 = \dots \times \dots$

$27 = \dots \times \dots$

$5 = \dots : \dots$

$8 = \dots : \dots$

$1 = \dots : \dots$

$2 = \dots : \dots$

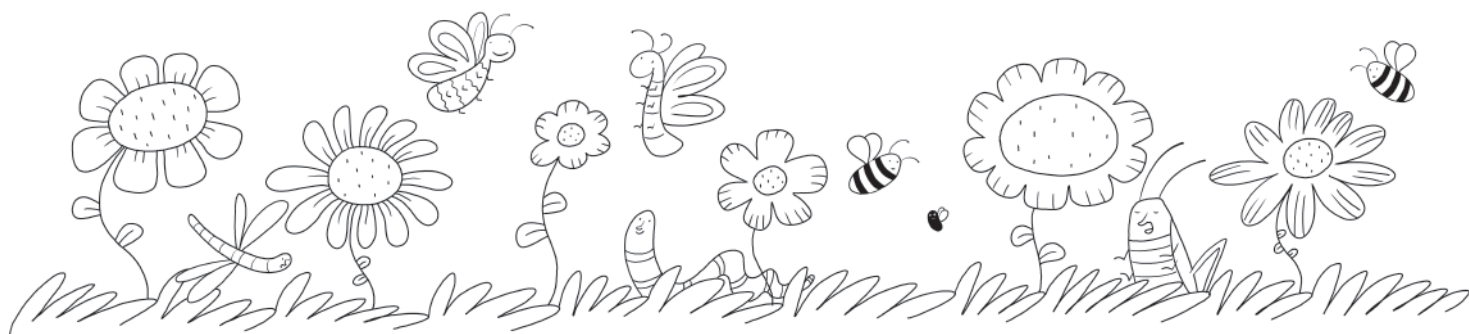
$3 = \dots : \dots$

$7 = \dots : \dots$

$4 = \dots : \dots$

$9 = \dots : \dots$

$6 = \dots : \dots$



2 Esegui le moltiplicazioni.

$23 \times 10 = \dots$

$6 \times 100 = \dots$

$2 \times 1000 = \dots$

$89 \times 10 = \dots$

$14 \times 10 = \dots$

$17 \times 100 = \dots$

$4 \times 1000 = \dots$

$87 \times 100 = \dots$

$45 \times 10 = \dots$

$76 \times 100 = \dots$

$9 \times 1000 = \dots$

$5 \times 1000 = \dots$

3 Completa le divisioni.

$120 : \dots = 12$

$\dots : 10 = 7$

$340 : \dots = 34$

$\dots : 1000 = 5$

$300 : \dots = 3$

$\dots : 100 = 13$

$800 : \dots = 80$

$2100 : \dots = 21$

$7000 : \dots = 7$

$\dots : 1000 = 9$

$6000 : \dots = 600$

$\dots : 10 = 40$



MOLTIPLICAZIONI E DIVISIONI VELOCI

1 Scrivi la numerazione dei seguenti numeri.

11

11 22 ○ ○ ○ ○ ○ ○ ○ ○

12

12 24 ○ ○ ○ ○ ○ ○ ○ ○

15

15 30 ○ ○ ○ ○ ○ ○ ○ ○

2 Calcola applicando la **proprietà distributiva della moltiplicazione**.

$18 \times 4 = (10 \times 4) + (8 \times 4) = \dots + \dots = \dots$

$17 \times 7 = (\dots \times \dots) + (\dots \times \dots) = \dots + \dots = \dots$

$23 \times 5 = \dots = \dots = \dots$

$48 \times 3 = \dots = \dots = \dots$

$62 \times 9 = \dots = \dots = \dots$

$124 \times 4 = \dots = \dots = \dots$

3 Calcola applicando la **proprietà invariante della divisione**.

$28 : 14 = (28 : 2) : (14 : 2) = \dots : \dots = \dots$

$32 : 16 = (\dots : \dots) : (\dots : \dots) = \dots : \dots = \dots$

$45 : 15 = \dots = \dots = \dots$

$72 : 18 = \dots = \dots = \dots$

$243 : 81 = \dots = \dots = \dots$

$288 : 32 = \dots = \dots = \dots$



